

[C.S.P.D.C.L]

Capital Investment Plan for the Control Period from FY 2026-27 to FY 2029-30

Submitted to:

Chhattisgarh State Electricity Regulatory Commission

December 2025

Chhattisgarh State Power Distribution Company Limited, Raipur
(A Government of Chhattisgarh Undertaking)

Regd. Off.: Executive Director (RA&PM), CSPDCL
4th Floor, Vidhyut Sewa Bhawan, Dangania, Raipur - 492013

Tel.: 0771-2574441

Email: cecomcseb@rediffmail.com



CHHATTISGARH STATE POWER DISTRIBUTION COMPANY LIMITED

(A Government of Chhattisgarh Undertaking) (A Successor Company of CSEB)

CIN U40108CT2003SGC015822

OFFICE OF EXECUTIVE DIRECTOR (RA&PM), CSPDCL, RAIPUR

Email ID:cecomcseb@rediffmail.com, Phone (0771) 2574441, website:www.cspdcl.co.in

No.02-02/RAC/SE/1/ 4473

Raipur, Date: 29.12.2025

To,

**The Secretary,
Chhattisgarh State Electricity Regulatory Commission,
Irrigation Colony, Shanti Nagar,
Raipur, Chhattisgarh - 492 001**

Sub: Submission of Petition for approval of Capital Investment Plan for the control period from FY 2026-27 to FY 2029-30

Dear Sir,

In exercise of its powers conferred under section 61 of the Electricity Act, 2003, the Hon'ble Commission has notified the CSERC (Terms and Conditions for determination of tariff according to Multi-Year Tariff principles and Methodology and Procedure for determination of Expected revenue from Tariff and Charges) Regulations, 2021 (hereinafter referred as "CSERC MYT Regulations, 2021") vide dated 18.11.2021.

Accordingly, and with the provisions mentioned in the above Regulations, CSPDCL is herewith submitting Petition for approval of Capital Investment Plan for the Control Period from FY 2026-27 to FY 2029-30 for consideration of the Hon'ble Commission. We enclose herewith the following documents for your perusal and approval of the Hon'ble Commission:

1. Formal Petition, Formats and Affidavit verifying the Petition along with authorization.
2. Petition for approval of Capital Investment Plan for the control period from FY 2026-27 to FY 2029-30 in three copies.
3. Petition Fee of Rs. 20,000 /- (Rupees Twenty Thousand) only through RTGS/NEFT with transaction no. UBIN0253398785 dtd. 05.12.2025.

We request the Hon'ble Commission to kindly admit the aforesaid Petition and proceed further in the matter at the earliest. We would also request the Hon'ble Commission to kindly provide us an opportunity of personal hearing to further clarify/explain/ add/amend our submissions in respect of this Petition.

Thanking You
Encl.: As above

Yours Faithfully,

**Executive Director (RA&PM)
CSPDCL: Raipur**

**BEFORE THE CHHATTISGARH STATE ELECTRICITY REGULATORY
COMMISSION, RAIPUR**

IN THE MATTER OF : Filing of the Petition for the approval of Capital Investment Plan for the Control Period FY 2026-27 to FY 2029-30 under Section 62 and 64 of the Electricity Act, 2003

AND

PETITION BY : Chhattisgarh State Power Distribution Company Limited
(hereinafter referred as "CSPDCL" or "Petitioner" or Applicant)

The Applicant respectfully submits as under: -

1. The Petitioner is a distribution licensee in the areas as notified by the Government of Chhattisgarh (GoCG) under the CSEB Transfer Scheme Rules, 2010.
2. The Petitioner submits that the Hon'ble Commission has approved the CSERC (Terms and Conditions for determination of tariff according to Multi-Year Tariff principles and Methodology and Procedure for determination of Expected revenue from Tariff and Charges) Regulations, 2025 (hereinafter referred as "CSERC MYT Regulations, 2025"); in exercise of powers conferred on it by Section 61 read with Section 181(2) of the Electricity Act 2003 (No. 36 of 2003) and to enable determination of Capital Investment as per provisions 7 of the said Regulations.
3. The Capital Investment Plan for MYT Control Period i.e. FY 2022-23 to FY 2024-25 was approved by Commission in Petition No. 04 of 2022 through Order dtd. 27.04.2022. Further, Hon'ble Commission has approved additional CIP of Rs. 1141.96 Crore under ND (Obligatory) Scheme from FY 2021-22 to FY 2024-25 vide order dated 08.07.2025 in Petition No. 91 of 2024.
4. The Petitioner accordingly submits that in line with the provisions of the MYT Regulations, 2025 is hereby filing the Petition for Approval of Capital Investment Plan for the control period from FY 2026-27 to FY 2029-30.
5. As per MYT Regulations, 2025 Regulation 7.2 (b) (iv), a distribution licensee needs to submit a sales forecast, load forecast, power procurement plan, proposed measure to ensure 24X7 quality supply, installation of meters at all connections, to bring transparency in billing, and loss reduction plan and improvement of consumer services. The Petitioner would like to submit that proposal about sales forecast, load forecast, power procurement plan to supply 24X7 electricity to consumers shall be contained in the ARR Petition for the control period from FY 2026-27 to FY 2029-30. Installation of smart meters in consumer premises and affairs connected to transparency in billing would require additional investment and, in this regard, it is to submit that such investments are covered under revamped distribution

scheme (RDSS). The Petitioner has included financial investments of RDSS scheme under the present Petition for the consideration of Hon'ble Commission. The scheme aims to install metering in distribution transformer/feeder, consumer metering, loss reduction and modernisation of network and consumer services.

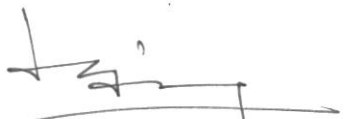
PRAYER TO HON'BLE COMMISSION

6. The Petitioner most respectfully prays to Hon'ble Commission:
- i) To invoke the power conferred to it under relevant sections of Electricity Act, 2003 read with clause 7 of MYT Regulations, 2025 and to admit the present Petition seeking approval of capital investment plan for the Control Period FY 2026-27 to FY 2029-30.
 - ii) To pass any other order as the Hon'ble Commission may deem fit and proper under the facts and circumstances of the present case and to meet the interest of justice.
 - iii) To condone any error/omission in the petition and to rectify the same.
 - iv) The present filing is being done on the basis of best available information and in case of any change, the Petitioner may be permitted to make further submissions, additions and alteration to the Petition as may be necessary during the Regulatory process.

In light of the above, Petitioner most humbly submits the present CIP petition for kind consideration.

Dated:

Petitioner



Executive Director (RA&PM)
CSPDCL: Raipur

Table of Contents

1	Background	8
2	CAPITAL INVESTMENT PLAN.....	10
2.2	Government Funded Schemes for the Control Period: FY 2026-27 to FY 2029-30	12
2.2.1	Agriculture Pump Energization:.....	12
2.2.2	Mukhya Mantri Shahari Vidyutikaran Yojna:.....	13
2.2.3	Mukhya Mantri Majra Tola Vidyutikaran Yojna:.....	17
2.2.4	Revamped Distribution Sector Scheme:.....	18
2.2.5	Cable Testing Laboratory:.....	24
2.3	CSPDCL (Partly or Fully) Funded Schemes in the Control Period: FY 2026-27 to FY 2029-30	25
2.3.1	Sub Transmission and System Improvement Scheme (ST&SI):.....	25
2.3.2	Normal Development scheme (Obligatory):.....	26
2.3.3	Normal Development Scheme (Contributory).....	29
2.3.4	Investment Plan for Energy Info Tech Centre (EITC):.....	32
2.3.5	Investment Plan for Civil Construction Work.....	63
3	Prayer to the Hon'ble Commission.....	65



List of Tables

Table 1: Achievement against approved CIP for FY 2025-26(in Rs. Cr.).....	9
Table 2: Capital Investment plan for the control period FY 2026-27 to FY 2029-30.....	10
Table 3: Proposed Structure of Capital Investment for partly or fully CSPDCL funded schemes from FY 2026-27 to FY 2029-30 (in Rs. Crore).....	11
Table 4: Govt Budget - Pump Electrification (in Rs. Crore).....	12
Table 5: Progress of Agricultural Pump Connections.....	12
Table 6: Year wise Physical and Financial Performance- Agriculture Pump Electrification (in Rs. Crore)..	12
Table 7: Capital expenditure towards Agriculture Pump Electrification during FY 2025-26.....	13
Table 8: Funding arrangement for Agriculture Pump Energization – FY 2026-27 to FY 2029-30 (in Rs. Crore).....	13
Table 9: Year wise Physical and Financial Performance under MMSVY (Rs. Crore).....	14
Table 10: Government Budget - MMSVY (Rs in Cr).....	14
Table 11: Approved and Proposed Underground cabling work.....	15
Table 12: Capital structure for FY 2025-26 to FY 2029-30 - MMSVY.....	16
Table 13: Financing arrangement for MMSVY (Rs. Crores).....	17
Table 14: Year wise physical and Financial Performance under MMTVY (Rs. Crore).....	17
Table 15: Government Budget - MMTVY (Rs in Cr).....	17
Table 16: Capital Expenditure towards Mukhya Mantri Majra Tola Vidyutikaran Yojna.....	18
Table 17: Funding arrangement for MMTVY FY 2025-26 to FY 2029-30 (Rs. Crore).....	18
Table 18: Performance up to September 2025 towards Revamped Scheme as submitted by CSPDCL (in Rs. Crore).....	20
Table 19: Physical Target for Revamped Distribution Sector Scheme.....	22
Table 20: Financial Target of Revamped Distribution Sector Scheme.....	23
Table 21: Funding arrangement for Revamped Distribution Sector Scheme FY 2025-26 (Rs in Crore).....	24
Table 22: Capital Expenditure towards Installation of equipment for Cable Testing Laboratory.....	24
Table 23: Year-wise physical and Financial Performance - ST&SI.....	25
Table 24: Capital Expenditure towards ST&SI.....	26
Table 25: Funding arrangement for ST&SI FY 2026-27 to FY 2029-30 (in Rs. Crore).....	26
Table 26: Year-wise physical and Financial Performance – ND (Obligatory).....	27
Table 27: Capital Expenditure towards Normal Development (Obligatory) Scheme.....	28
Table 28: Funding arrangement during the Control Period for ND(Obligatory)- FY 2026-27 to FY 2029-30 (in Rs. Crore).....	29
Table 29: Year-wise physical and Financial Performance – ND (Contributory).....	30
Table 30: Capital Expenditure towards Normal Development (Contributory) Scheme.....	31
Table 31: Funding arrangement during the Control Period for ND(Obligatory)- FY 2026-27 to FY 2029-30 (in Rs. Crore).....	31
Table 32: Physical and Financial Progress of the Projects Sanctioned for FY 2025-26 (up to September 2025).....	32
Table 33: Targets for Capital Investment Plan for the Control Period – FY 2026-27 to FY 2029-30 (In Rs. Crore).....	36
Table 34: Funding arrangement for EITC 2026-27 to FY 2029-30 (Rs in Crore).....	40
Table 35: Year-wise Financial Performance - civil construction work.....	63
Table 36: Capital investment proposed for civil works under different schemes FY 2026-27 TO FY 2029-30 (in Rs. Crore).....	63
Table 37: Capital investment proposed for Civil construction works across divisions under diff. schemes for the control period FY 2025-26 TO FY 2029-30.....	64
Table 38: Financing arrangement for the civil and construction scheme (in Rs. Crore).....	64

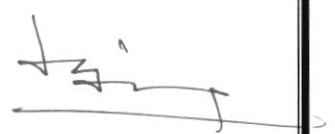


NOTES AND ABBREVIATIONS

In this Petition:

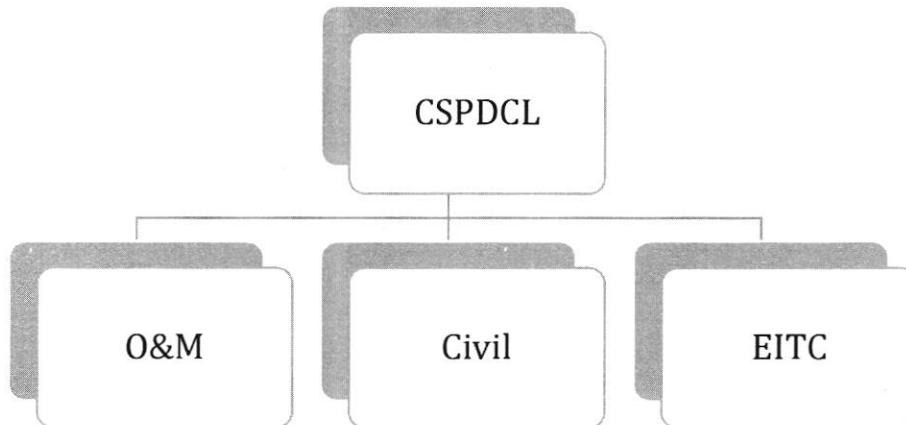
- ✓ Ensuing Year is defined as Financial Year 2026-27 (FY 2026-27 / FY 2027)
- ✓ Current Year is defined as Financial Year 2025-26 (FY 2025-26 / FY 2026)
- ✓ Previous Year is defined as Financial Year 2024-25 (FY 2024-25 / FY 2025)
- ✓ Control Period is defined as Financial Year 2026-27 (FY 2026-27 / FY 2027) to Financial Year 2029-30 (FY 2029-30 / FY 2030)
- ✓ All currency figures used in this Petition, unless specifically stated otherwise, are in Rs. Crore.

Abbreviation	Full Description
APDRP	Accelerated Power Development and Reforms Program
ARR	Aggregate Revenue Requirement
AT&C	Aggregate Technical & Commercial
CERC	Central Electricity Regulatory Commission
BIS	Bureau of Indian Standards
BPL	Below Poverty Line
BRGF	Backward Region Fund
CGS	Central Generating Stations
CM	Cash Management
CPP	Captive Power Plant
CPSU	Central Public Sector Unit
CSEB	Chhattisgarh State Electricity Board
CSERC	Chhattisgarh State Electricity Regulatory Commission
CSPDCL	Chhattisgarh State Power Distribution Company Limited
CSPGCL	Chhattisgarh State Power Generation Company Limited
CSPHCL	Chhattisgarh State Power Holding Company Limited
CSPTCL	Chhattisgarh State Power Transmission Company Limited
CSPTrdCL	Chhattisgarh State Power Trading Company Limited
DMS	Document Management System
DE	De-electrified
DR	Data Repository
EA-2003	The Electricity Act 2003
EITC	Energy Info Tech Centre
ERP	Enterprises Resource Planning
FICO	SAP Finance and Control
FM	Fund Management
FY	Financial Year
GIS	Geographic Information System
GoCG	Government of Chhattisgarh
GoI	Government of India
HR	Human Resource
HT	High Tension
HV	High Voltage
HVDS	High Voltage Distribution System
IAP	Integrated Action Plan
IEEE	Institute of Electricals and Electronics Engineers
kV	Kilo-Volt
kVA	Kilo-Volt-Ampere



1 Background

- 1.1.1.1 Chhattisgarh State Electricity Board (CSEB) was a part of the erstwhile Madhya Pradesh State Electricity Board (MPSEB) till 2000. It became a separate entity with the formation of the State of Chhattisgarh. The board functioned as unified entity till December 2008 when the State Government notified a transfer scheme for unbundling it. The transfer scheme resulted in the formation of five successor entities for undertaking the functions of the erstwhile board. Chhattisgarh State Power Distribution Company Limited (CSPDCL) is one of the five successor entities, formed for undertaking the 'Distribution function' of CSEB. CSPDCL started its operations on 1st January 2009.
- 1.1.1.2 To increase private sector participation and provide more certainty to the utilities regarding tariff, most State Electricity Regulatory Commission including Chhattisgarh State Electricity Regulatory Commission (CSERC) have moved from an annual tariff framework to a multi-year tariff regime, with an aim to bring about clarity on regulatory principles, reduce regulatory risks and incentivize efficient operations from utilities. The multi-year tariff framework provides greater regulatory certainty by providing utilities a longer period to plan, forecast and implement their efficiency improvement plan.
- 1.1.1.3 Chhattisgarh State Electricity Regulatory Commission by exercising its powers conferred under Section 61 read with Section 181(2) of the Electricity Act, 2003 and all other powers enabling it in this behalf, approved the CSERC (Terms and Conditions for determination of tariff according to Multi-Year Tariff principles and Methodology and Procedure for determination of Expected revenue from Tariff and Charges) Regulations, 2025 (hereinafter referred as "CSERC MYT Regulations, 2025").
- 1.1.1.4 In the regulation 7, the Commission envisages the filing of capital investment plan for the entire Control Period, with details for each year of the Control Period. The present capital Investment plan is being submitted in compliance with the provisions of CSERC (Terms and Conditions for determination of tariff according to Multi-Year Tariff principles and Methodology and Procedure for determination of Expected revenue from Tariff and Charges) Regulations, 2025 (hereinafter referred as "CSERC MYT Regulations, 2025").
- 1.1.1.5 In pursuance to CSERC directions, the Petitioner also require to submit scheme wise status of actual vs approved capital investment plan for last control period.
- 1.1.1.6 CSPDCL normally carries out the capital expenditure activities through three major divisions as shown below:



1.1.1.7 Table below indicate the comparison between the target approved by the Hon'ble Commission and the actual performance of CSPDCL for FY 2025-26. The Petitioner would like to submit that the achievement for the FY 2025-26 is latest up to September 2025. Scheme-wise actual performance versus target, has been discussed in the subsequent section of the report.

Table 1: Achievement against approved CIP for FY 2025-26(in Rs. Cr.)

Sr. No.	Scheme	Approved	Achievement (up to 30.09.2025)
1	Agriculture pumps Energization and RE works other than RGGVY	200.00	78.72
2	Mukhya Mantri Shahri Vidyutikaran Yojana	250.00	24.70
3	Mukhya Mantri Majra Tola Vidhytikaran	100.00	5.72
4	Revamped Schemes	1,462.18	703.10
5	Smart meter testing bench	9.87	-
6	ND Scheme (Obligatory)	900.00	295.45
7	Sub Transmission and System Improvement Scheme	515.53	119.92
8	EITC SAP & IT Project*	232.76	1.10
9	Civil Works	187.27	2.65
10	ND Scheme (Contributory)	200.00	28.11

1.1.1.8 This Capital Investment Plan has been prepared for the Control Period FY 2026-27 to FY 2029-30. CSPDCL is planning major investments to improve its service and reach to consumers. The key thrust areas identified for the current investment plan includes:

- a) Augmenting and strengthening the sub-transmission and distribution systems to achieve the load growth.
- b) Schemes focused on reducing the distribution loss;
- c) Increasing the quality and reliability of supply and services to consumers.



2 CAPITAL INVESTMENT PLAN

2.1.1.1 In the Capital Investment Plan prepared for the control period FY 2026-2027 to FY 2029-30, CSPDCL has chalked out a detailed investment schedule. Different schemes have been identified to carry out the overall investment in the distribution segment of the power sector during the control period. Most of these schemes are long term in nature and would be funded by the government, financial institutions and also by CSPDCL's own equity. A summary of the key schemes is provided below:

**Table 2: Capital Investment plan for the control period FY 2026-27 to FY 2029-30
(in Rs. Crore)**

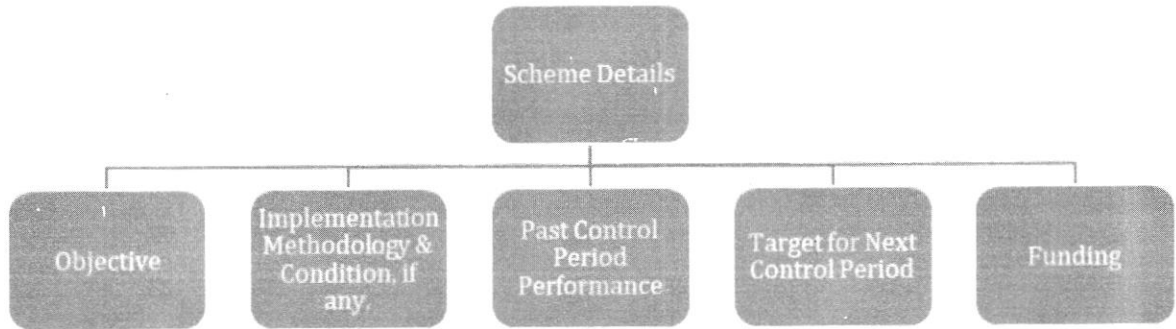
Sr. No.	Name of Scheme	2026-27	2027-28	2028-29	2029-30	Grand Total	% of Total
A	Government Funded Schemes	1139.00	300.00	400.00	300.00	2139.00	28.43
1	Agriculture pumps Energization and RE works other than RGGVY	50.00	100.00	200.00	100.00	450.00	5.98
2	Mukhya Mantri Shahri Vidyutikaran Yojana	100.00	100.00	100.00	100.00	400.00	5.32
3	Mukhya Mantri Majra Tola Vidhytikaran	100.00	100.00	100.00	100.00	400.00	5.32
4	Revamped Schemes	889.00	0	0	0	889.00	11.82
B	Partly or Fully CSPDCL Funded Schemes	1330.55	1328.94	1215.76	1108.54	4983.79	66.25
1	ND Scheme (Obligatory)	725.00	725.00	725.00	725.00	2900.00	38.55
2	Sub Transmission and System Improvement Scheme	248.20	248.20	248.2	248.2	992.80	13.20
3	EITC SAP & IT Project	177.43	168.12	185.29	93.22	624.06	8.30
4	Civil Works	178.99	187.62	57.27	42.12	466.00	6.19
5	Purchase and installation of Various equipments for Cable testing laboratory	0.93	0.00	0.00	0.00	0.93	0.01
C	Fully Funded by Consumer Contribution	100	100	100	100	400	5.32
1	ND Scheme (Contributory)	100.00	100.00	100.00	100.00	400.00	5.32
D	TOTAL	2569.55	1728.94	1715.76	1508.54	7522.79	100.00

- 2.1.1.2 It is evident from the table above that the emphasis for forthcoming capital investment plan is focused on improving and strengthening the existing distribution network with automation and underground cabling, smart metering and upgradation in consumer services including billing in urban as well as rural areas. Also it can be observed that significant outlay is planned towards a strong and upgraded IT system. This is aimed towards improving the data collection mechanism and also improving the online operational management.
- 2.1.1.3 CSPDCL is working towards organization level integration of internal and external information systems across various divisions. Further funds have been allocated to spruce up the consumer complaint redressal system. Financing mix for the planned capital expenditure in terms of Govt. grant, consumer contribution, debt and equity of CSPDCL is shown in Table below:

Table 3: Proposed Structure of Capital Investment for partly or fully CSPDCL funded schemes from FY 2026-27 to FY 2029-30 (in Rs. Crore)

Particulars	2026-27	2027-28	2028-29	2029-30	Grand Total
Debt	1,057.90	1,063.15	972.61	886.83	3,980.49
Consumer Contribution	100.00	100.00	100.00	100.00	400.00
Equity	532.11	265.79	243.15	221.71	1,262.75
Central / State Grant	879.54	300.00	400.00	300.00	1,879.54
Total	2,569.55	1,728.94	1,715.76	1,508.54	7,522.79

- 2.1.1.4 In backdrop of above scheme wise details are placed for kind consideration of Hon'ble Commission in subsequent para as given below:



[Handwritten signature]

2.2 Government Funded Schemes for the Control Period: FY 2026-27 to FY 2029-30

2.2.1 Agriculture Pump Energization:

Scheme Objective

2.2.1.1 The Chhattisgarh state government has identified this scheme for energization of agricultural pumps. The scheme would be completely funded by the State Government. To increase the irrigation facility to farmers of the state, State Govt. is providing financial assistance for the cost of extension of line & installation of Distribution transformer for energization of Agriculture Pump to CSPDCL. To provide quality supply to farmers, it has been decided to provide pump connection with HVDS.

Performance in the Control Period FY 2024-25 to FY 2025-26

2.2.1.2 In the control period FY 2024-25, the approved CIP estimation under this scheme was Rs 200 Cr against which actual expenditure of Rs 349 Cr. is achieved. CSPDCL wants to stress on the fact that the actual work under this scheme is done after receipt of grant. The details of fund approved and released from Govt. and performance in terms of finance and physical in respect of FY 2024-25 to FY 2025-26 up to (Sep 2025) is given in below tables:

Table 4: Govt. Budget - Pump Electrification (in Rs. Crore)

Particulars	FY 2024-25		FY 2025-26	
	Approved	Released	Approved	Released Till Sep 25
Agriculture Pump Electrification	200.00	200.00	50.00	-

Table 5: Progress of Agricultural Pump Connections

Particulars	FY 2024-25		FY 2025-26		Proposed plan for control period FY 2026-27 to FY 2029-30
	Target	Achievement	Target	Achievement Till Sep 2025	
Agriculture Pump Electrification	20200	22633	5650	6478	100000 (@20000 pump /year)

Table 6: Year wise Physical and Financial Performance- Agriculture Pump Electrification (in Rs. Crore)

Sr. No.	Particulars	FY 2024-25				FY 2025-26			
		Approved		Achievement		Approved		Achievement upto Sep 2025	
		PHY (No.)	FIN (Rs. Crore)	PHY (No.)	FIN (Rs. Crore)	PHY (No.)	FIN (Rs. Crore)	PHY (No.)	FIN (Rs. Crore)
1	11 Kv Line(Km)	500.00	75.00	1,441.86	108.65	800.00	40.00	85.00	4.42
2	Distribution X-mer								
	New(Nos)	600.00	17.00	5,011.00	125.76	4,000.00	65.00	75.00	60.40
3	LT Line K.M.	1,500.00	108.00	1,902.16	114.56	95.00	95.00	96.00	13.90
	TOTAL		200.00		348.97		200.00		78.72



Target for control period FY 2026-27 TO FY 2029-30:

2.2.1.3 CSPDCL would like to submit that based on the budget provision made by the state government in the control period FY 2026-27 TO FY 2029-30, it has estimated an investment of approximately Rs. 450.00 Cr during the entire control period. The estimation is towards extension of 11 kV network and installation of distribution transformers along with laying new LT Lines for pump energization. The petitioner would like to submit that the state govt. allows an average expenditure of Rs 100000 per pump and the same is considered to project the YoY financial target under this scheme. The year wise targets are provided in table below:

Table 7: Capital expenditure towards Agriculture Pump Electrification during FY 2025-26

Sr. No.	Particulars	FY 2026-27		FY 2027-28		FY 2028-29		FY 2029-30		TOTAL	
		PHY (No.)	FIN (Rs. Crore)	PHY (No.)	FIN (Rs. Crore)	PHY (No.)	FIN (Rs. Crore)	PHY (No.)	FIN (Rs. Crore)	PHY (No.)	FIN (Rs. Crore)
1	11 KV Line (KM)	50.00	12.00	250.00	18.00	500.00	46.00	250.00	18.00	1,050.00	94.00
2	Distribution Transformer (No.)	250.00	15.00	300.00	32.00	600.00	65.00	300.00	32.00	1,450.00	144.00
3	L.T. Line (KM)	250.00	23.00	750.00	50.00	1,500.00	89.00	750.00	50.00	3,250.00	212.00
GRAND TOTAL			50.00		100.00		200.00		100.00		450.00

Funding requirement

2.2.1.4 A total of Rs 450.00 Cr is envisaged to be spent over the aforementioned four-year control period. The funding requirement is provided in table below:

Table 8: Funding arrangement for Agriculture Pump Energization – FY 2026-27 to FY 2029-30 (in Rs. Crore)

Sr. No.	Particulars	Financing Mix	FY 2026-	FY 2027-	FY 2028-	FY 2028-	TOTAL
			27	28	29	29	
1	Total Capital Expenditure	100.00%	50.00	100.00	200.00	100.00	450.00
A	Government Grant	100.00%	50.00	100.00	200.00	100.00	450.00
B	To be funded by CSPDCL	0.00%	0	0	0	0	0.00

2.2.2 Mukhya Mantri Shahari Vidyutikaran Yojna:

Scheme Objective

2.2.2.1 The Chhattisgarh government has started the scheme named Mukhya Mantri Shahari Vidyutikaran Yojana (MMSVY) to keep up with the increasing power requirement from the urban centres in the state. The scheme aims to achieve the following objectives:

- Expansion of electrical lines in the non-electrified areas of the cities included in the municipal corporation area.
- Arranging for the safe placement of electrical lines and transformers along the roads within the municipal corporation area.
- Installation of new transformers and shifting of existing transformers to load centers within the municipal corporation limits to resolve low voltage issues.
- To reduce distribution line losses in the municipal corporation area, replace existing open wires with insulated cables.
- Replace the wires of electrical lines in the municipal corporation area with appropriately rated wires if they are overloaded.
- Convert overhead electrical lines to underground lines in densely populated areas.
- Provide free electricity connections to all BPL families in the municipal corporation area and carry out the necessary line extension work for electricity connections.